

# LiGO+ - Smart Lighting Control Solution

Complete lighting control with simple system integration

## LiGO+ lighting control platform

The LiGO+ smart lighting control solution is based on the manufacturer-independent DALI and DALI-2 standards making it possible to create flexible, cost-effective and easy to engineer smart lighting systems.

LiGO+ is the range topping hardware variant of our smart lighting control solutions, packed with control features, functionality and a multitude of integration possibilities. LiGO+ supports up to a maximum of 8 DALI networks, with the use of additional SIPslice DALI devices; making it a perfect choice for offices, universities and projects of all sizes.

The solution can function as a standalone system or as part of a larger interfaced system via the available BMS &/or IoT protocols. With a host of features including tunable white, Circadian Rhythm and RGBW colour control, it's easy to create an energy efficient and great looking buildings or feature areas.



## LiGO+ control features



### Key features:

- **Feature-Packed Control:** Packed with advanced control features, LiGO+ empowers you to optimise energy savings, extend the life of LED installations, and effortlessly manage lighting scenarios.
- **Versatile Compatibility:** LiGO+ operates seamlessly as a standalone system or integrates effortlessly with Building Management Systems (BMS) and IoT platforms, offering a comprehensive solution for diverse needs.
- **Perfect for Various Spaces:** LiGO+ is the smart choice for creating efficient and aesthetically pleasing lighting designs.
- **Flexibility:** LiGO+ supports up to 512 devices via the use of up to 8 SIPslice DALI devices
- **Out of the box:** LiGO+ includes embedded tools and a suite of pre-programmed smart lighting control algorithms to quickly group the luminaires, set the scene and optimally control LEDs to derive best performance and energy savings.
- **Tunable White** Adjust lighting colour temperature for different moods and activities.
- **Circadian Rhythm Control:** Enhance well-being by synchronising lighting with natural circadian rhythms.
- **RGBW Colour Control:** Infuse vibrant colours into your spaces, creating visually appealing environments.

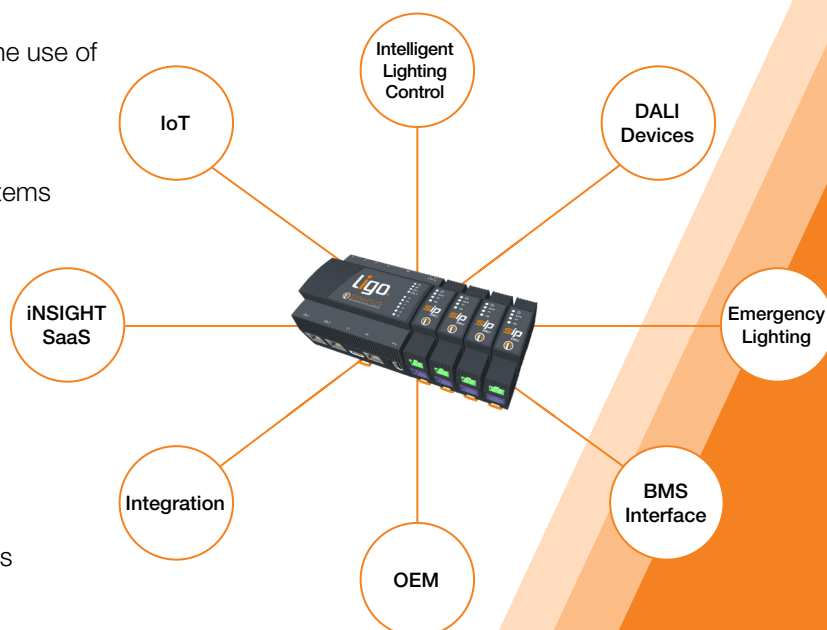
## LiGO+ hardware features and specifications

LiGO+ has been designed to be easy for an engineer install, configure and also be simple for the end user to operate, the control hardware includes:

- Connection for an additional 512 devices added via the use of up to 8 SIPslice DALI devices
- LEDs to show Power, Comms, Bus status etc.
- Optional BMS compatibility to TREND or BACnet systems
- Optional IoT compatibility to smart building systems
- Integrated DIN Rail mounting

LiGO+ supported protocols include:

- DALI and DALI-2
- MQTT - supports AWS, Azure, Google IoT Core (supports publish/subscribe with a third party broker)
- REST Server - supports three REST client connections
- BACnet IP Server
- vIQ



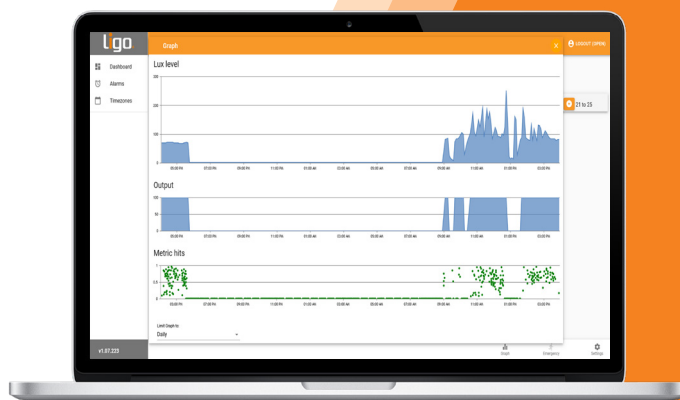
## Commissioning and support

As with all Synapsys products and software solutions, Our LiGO+ hardware devices have been designed to be simple to deploy and use.

Our Commissioning engineers, Software and Technical support teams are available to support installation and set-up, right through to handover to the end user.

We also provide customers with access to our SIP Integrator support website, which contains all of our technical data sheets and information about our latest technical updates.

Through our SIP Integrator support website we also give customers access to our free tools which simplify the commissioning and configuration of our products, saving you time and money.



## LiGO+ product range

Part No.	Description
LIGO+	LiGO+ Lighting Controller
LIGO+/Connect	LiGO+ Lighting Controller with Connection to BEMS & IoT

## Want to know more?

If you would like to know more or have any questions about our LiGO+ hardware and its capabilities, please contact your local Synapsys Account Manager, call us on 01444 246 128 or email us at [enquiries@synapsys-solutions.com](mailto:enquiries@synapsys-solutions.com).

For more information about Synapsys and our product range please visit [www.synapsys-solutions.com](http://www.synapsys-solutions.com).

© 2024, Synapsys Solutions Ltd, All rights reserved.

Synapsys Solutions Ltd  
No. 1 Woodlands Court, Albert Drive,  
Burgess Hill, West Sussex, RH15 9TN

T: 01444 246 128  
E: [enquiries@synapsys-solutions.com](mailto:enquiries@synapsys-solutions.com)  
W: [www.synapsys-solutions.com](http://www.synapsys-solutions.com)

 **SYNAPSYS**  
BUILDING INTELLIGENCE